

INSTRUCTIONS

Donkersloot
PAPERFRAME

Donkersloot Paperframes are made from robust cardboard that is reinforced with a gloss laminate finish, which also means they can be wiped clean with a damp cloth.

How is a Paperframe assembled?

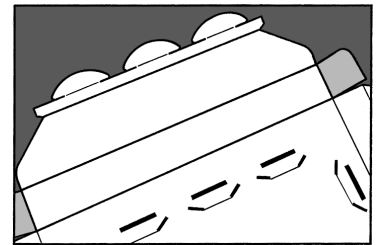
Assembling a Donkersloot Paperframe is very easy.

Follow the instructions below or the instructions printed on the back of each Paperframe. You can also watch the entire process on the instruction video by clicking the 'What is a Paperframe' button.

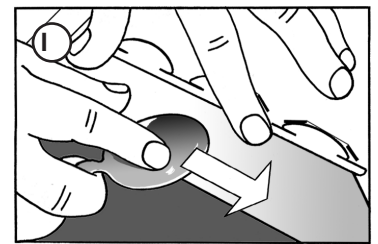


Follow these instructions . . .

1. Place the Paperframe on a hard, flat surface (a table) with the printed side facedown. Fold the cut-out along all the folding lines, making sure that you firmly crease each fold. You could use the back of a spoon to do this. It is important to do this correctly because the crisper the folds the more beautiful the result.



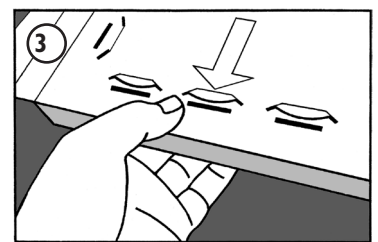
2. Ensure that the ten round tabs around the sides are also properly pre-folded, This is important, as it ensures that the tabs can be properly clicked into the slits on the back later.



3. Now flip the Paperframe so that the back is facing you. This simplifies sliding the tabs into the slits, as they will not be visible while you do this (see the instruction video).

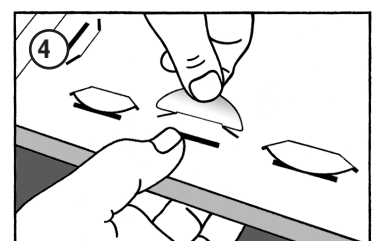


4. Both of the long sides must be assembled first. Slide all the tabs into the slits and then pull them all the way up until the flaps protrude completely.



5. The four short rectangular side-tabs on the short ends of the cut-out only have to be pressed into the corners and should not be folded all the way inside.

6. Now fold the short sides. Slide the tabs into the slits and then pull them all the way up until the flaps protrude completely (see the instruction video).



7. Now fold the short sides. Slide the tabs into the slits and then pull them all the way up until the flaps protrude completely (see the instruction video).

8. Gently flex the Paperframe cut-out so that all the joints settle into place (see the instruction video).

9. Four hanging holes have been punched into the back of the Paperframe.

The Paperframe is very light. This means that a small piece of double-sided foam tape (± 1 cm) can be used to affix it to a wall instead of nails.

You can also use the accompanying folding stand. This is easily assembled by folding it along the folding lines and inserting the large round tab into the opening and pressing it until it slides into place. Slide the tab (with the rounded corners) into one of the slits on the back of one of the short or the long sides to secure it to the frame.

How do I fix the Clickcard into the frame?

You can use the tabs to fix a Clickcards in the Paperframe. No glue is required.

1. Insert the top edge of the Clickcard under the top edge of the Paperframe.
2. Gently bend the Clickcard and insert the lower edge under the bottom edge of the Paperframe.
3. Now press the entire Clickcard around all its edges to firmly fix it into the Paperframe.

Use a flat or a sharp object to remove the Clickcard if you want to replace it with another one (see the instruction video).

